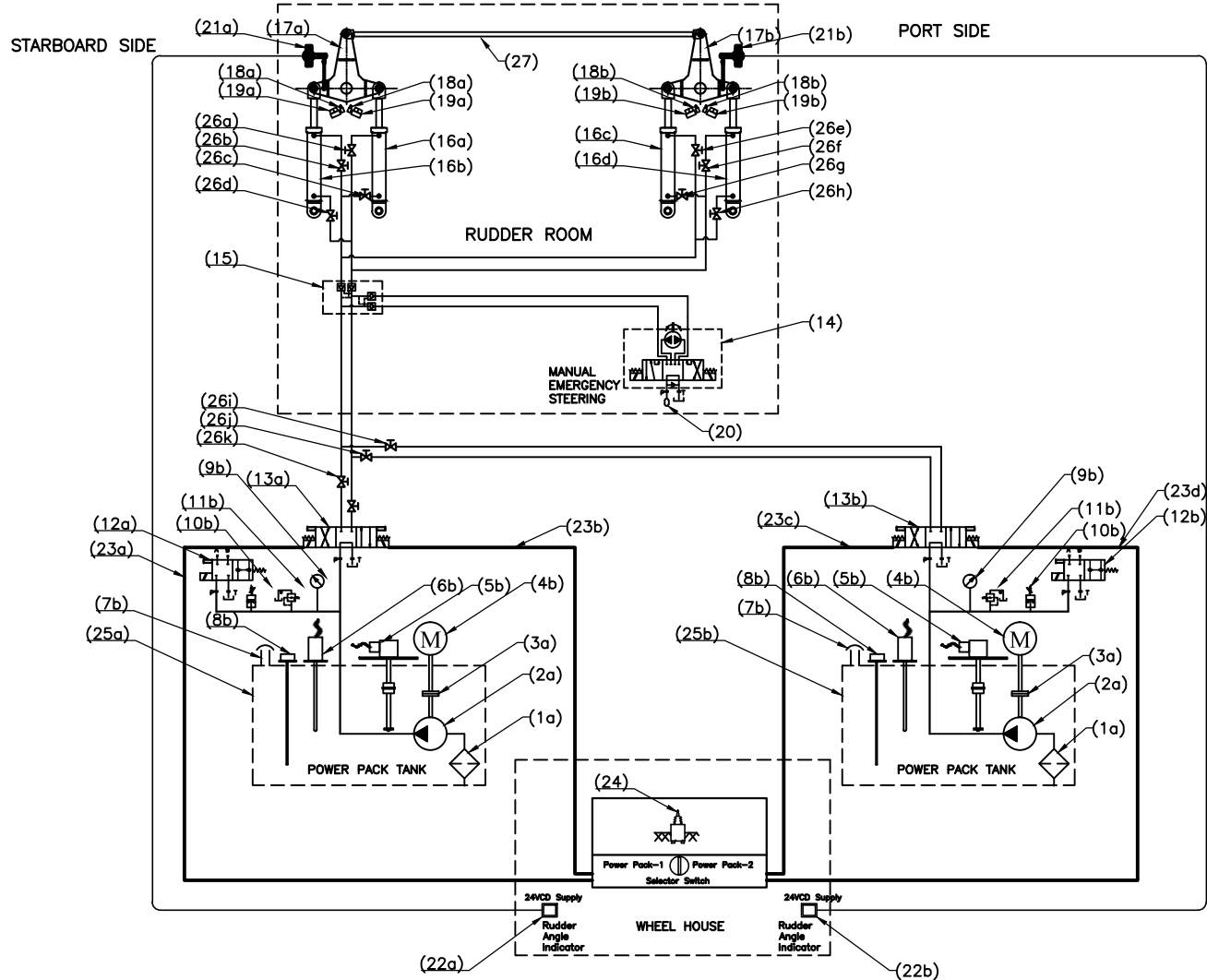


ELECTRO-HYDRAULIC CIRCUIT JZ-2800 IRSx2



27	Connection Rod
26a, 26b, 26c, 26d, 26e, 26f, 26g, 26h, 26i, 26j, 26k, 26l	Isolation Valve
25a, 25b	Power Pack Tank
24	Joystick
23a, 23b	Ele.Line to Sol.Operd.Valve
22a, 22b	Rudder Angle Indicator
21a, 21b	Rudder Angle Sensor
20a, 20b	Oil Reservoir
19a, 19b	Mechanical Stopper (Yard Supply)
18a, 18b	Limit Switch
17a, 17b	Tiller Arm
16a, 16b, 16c, 16d	Hyd.Actuator
15	Pilot Oper.Dou.Check Valve
14	Emer.Manual Helm Pump
13a, 13b	Sol. Oprtd.Dire.Control Valve
12a, 12b	Unloading Valve
11a, 11b	Pre.Switch.Low Pre.Alarm
10a, 10b	Pr.Relief Valve
9a, 9b	Pressure Gauge
8a, 8b	Oil Dip Stick
7a, 7b	Filler Breather
6a, 6b	Oil Temp. Sensor
5a, 5b	Oil Level Sensor
4a, 4b	Electric Motor
3a, 3b	Flexible Coupling
2a, 2b	Hydraulic pump
1a, 1b	Suction Strainer
SI No.	Description

Item	Scale	Material	View	Drawn	Checked
/	/	/		JK 10-06-23	VUK

Designation	Drawing No.	Qty.
ELECTRO-HYDRAULIC CIRCUIT JZ-2800 IRSx2	MHS-1260A	/

MAC N HOM SYSTEMS
KOCHI - 20

NOTE:
Rev. A - Joystick Position Changed.